

Erratum

Erratum to “Accommodation of compressional inversion in
north-western South Island (New Zealand): Old faults versus new?”

F.C. Ghisetti*, R.H. Sibson

Department of Geology, University of Otago, PO Box 56, Dunedin, New Zealand

The Publisher apologises that Fig. 3 did not appear in colour in the printed version of the journal. It is reproduced here in its intended format.

DOI of original article: 10.1016/j.jsg.2006.06.010.

* Corresponding author. Tel.: +64 03 4799051; fax: +64 03 4797527.

E-mail address: francesca.ghisetti@otago.ac.nz (F.C. Ghisetti).

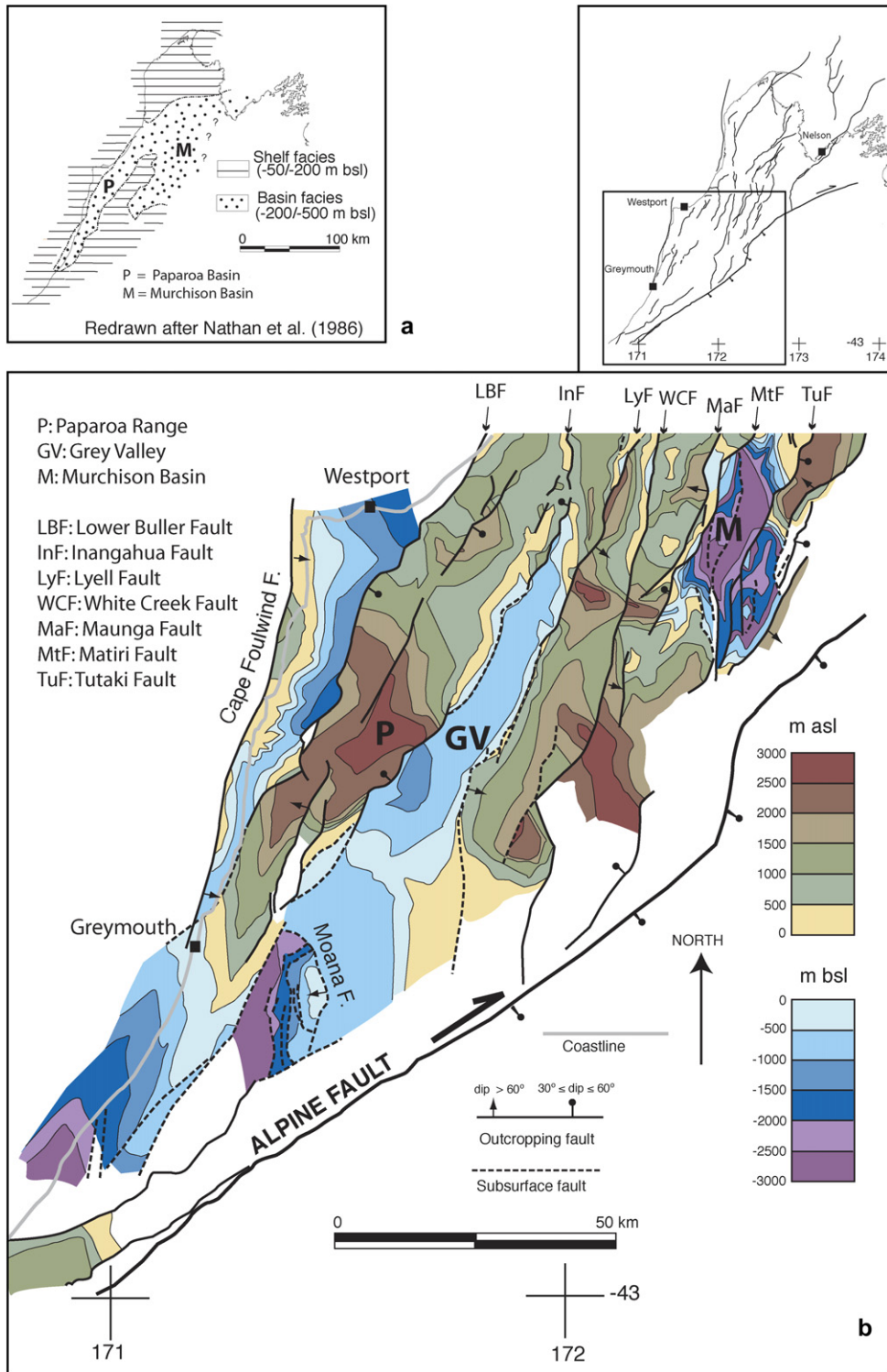


Fig. 3. (a) Paleogeographic reconstruction of the platform and basinal facies of the Oligocene carbonate sequence at time of deposition. (b) Structural contour map of the base of the Oligocene carbonate sequence for the southern part of the study area (regional location in inset). (c) Structural contour map of the base of the Oligocene carbonate sequence for the northern part of the study area. (Murchison basin (M) lies in the overlap region between the two maps; regional location in inset). Offshore data from King and Thrasher (1996).

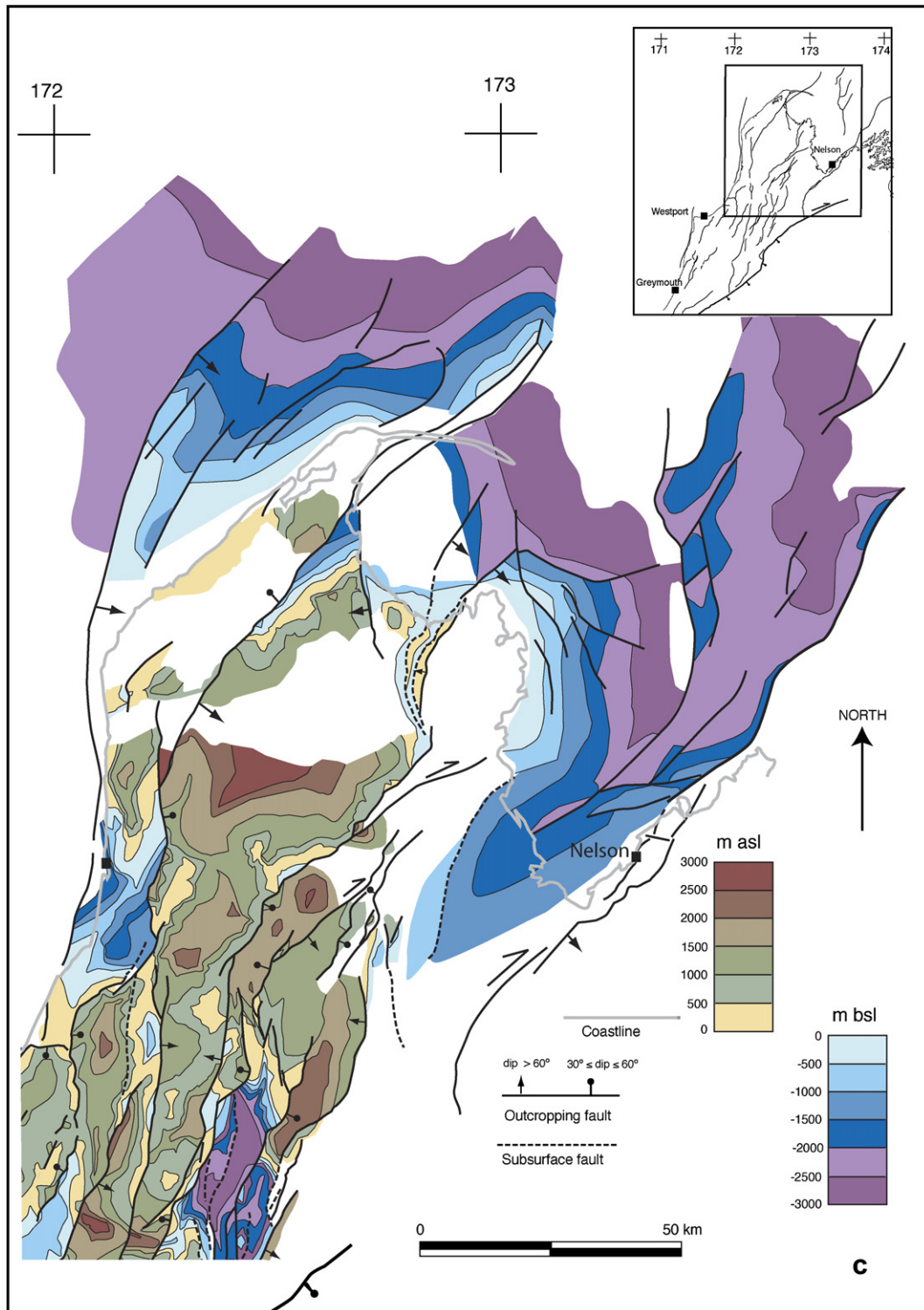


Fig. 3. (Continued)